

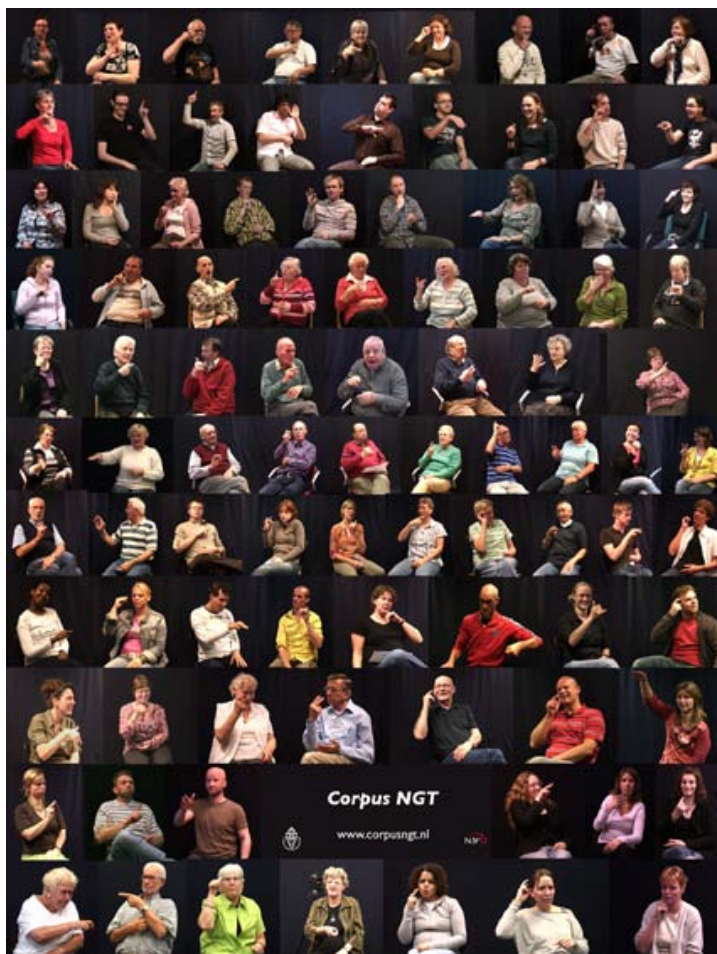
# SignLinC

*Linking lexical databases and annotated corpora of signed languages*

Onno Crasborn

Centre for Language Studies

Radboud Universiteit, Nijmegen



# Corpus NGT

72 uur video, dialogen

92 dove gebaarders

±20% geglost (links, rechts)

Nederlandse glossen

Geen lexicon



## Gebarenwoordenboek

In dit woordenboek vindt u de meest gebruikte algemene gebaren. Hier zijn niet alle gebaren te vinden die beschikbaar zijn. Gebaren die in de kleine woordenboeken staan die zijn uitgegeven door het Nederlands Gebarententrum, zijn te vinden onder gebarendatabank: Gebaren met je baby, gebaren in de gezondheidszorg, bijbelnaamgebaren en gebaren rondom dood en rouw. Wilt u meer gebaren? In de winkel kunt u een abonnement vinden op het online woordenboek Van Dale uitgebreid waar de 3000 gebaren en voorbeeldzinnen in staan uit het Van Dale Basiswoordenboek NGT. Dit online woordenboek zal worden uitgebreid tot zo'n 7000 gebaren. In de loop van 2010 zullen meer online woordenboeken in abonnementsvorm beschikbaar komen.

zoeken naar

zoekresultaat

- BIER fles
- BIER tap
- BIOSCOOP
- BLIJ
- BLIJ...
- BLOED
- BOODSCHAPPEN-DOEN
- BOODSCHAPPENLIJST
- BOOS
- BOOS kindergebaar

terug (A-Z lijst)

ZOEK

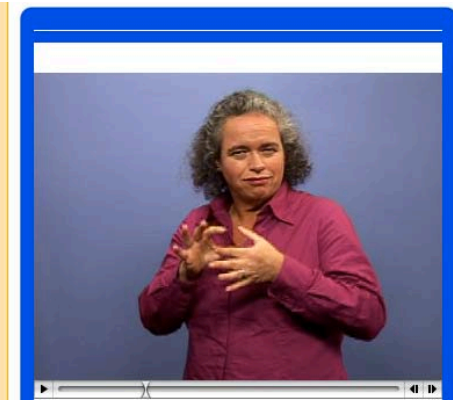
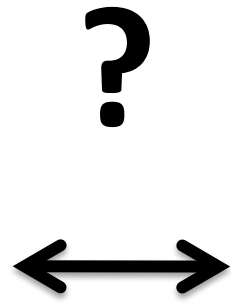


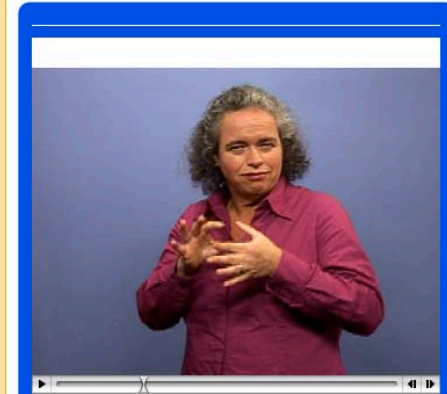
Info:

Gebruik:

Uitleg:

FILM





# Main window

The screenshot shows the Elan software interface with several components labeled:

- video player**: Located in the top-left corner, showing a video of people in a room.
- controls**: Located below the video player, containing playback controls like play, stop, and volume.
- viewers & controls**: A box pointing to the menu items 'Grid', 'Text', 'Subtitles', and 'Controls' at the top of the window.
- waveform viewer**: Located in the middle section, displaying an audio waveform with a vertical crosshair.
- crosshair**: A label pointing to the vertical red line in the waveform viewer.
- annotations**: A label pointing to the text segments in the timeline viewer.
- tiers**: A label pointing to the list of linguistic tiers on the left side of the timeline viewer.
- timeline viewer**: The bottom section showing a detailed timeline with text segments and a vertical crosshair.

Nr	Annotation	Begin Time	End Time	Duration
1	he's speaking into his 1/2 bush knife	00:00:31.708	00:00:32.708	00:00:01.000
2	I am saying that he's talking into a half bushknife	00:00:37.141	00:00:38.501	00:00:01.360
3	everything we are saying is going inside	00:00:39.336	00:00:40.536	00:00:01.200
4	See this fellow: he seems to me like a little frog	00:00:45.426	00:00:47.106	00:00:01.680
5	it's collecting all these things?	00:00:53.400	00:00:54.460	00:00:01.060
6	it's recording	00:00:55.521	00:00:56.056	00:00:00.535
7	You have sung them, sing them again	00:00:59.412	00:01:00.942	00:00:01.530
8	You sing those two parts of the MYââ mbwaa	00:01:01.120	00:01:02.462	00:00:01.342
9	You (P) ask him (Kp)	00:01:02.602	00:01:03.982	00:00:01.380
10	that thing, you sung those 2 parts of Myââ, sing them again	00:01:05.591	00:01:07.931	00:00:02.340
11	the next one	00:01:32.024	00:01:32.694	00:00:00.670



# LEXUS

LEXUS - Mozilla Firefox

File Edit View History Bookmarks Tools Help New Window New Tab AiOS-Toolbar IE View

Back Forward Reload Stop Home <http://corpus1.mpi.nl/mpi/lexusDojo/> ☆ dictionary

Firefox Links VPN-MPI FF Start surfsafe Welcome to the Max P... Gmail - Inbox - jringer... MPI mail

Inbox - Outlook Web Access Light LEXUS

**LEXUS**  
lexical  
resource  
tool

**Login**

Username:

Password:

*The recommended minimum screen resolution is 1280 x 1024.  
On lower resolutions information may not display properly.*

Done Internet Explorer

LexusViCos LEXUS - Mozilla Fi... LEXUS-ViCoS-Ass... Lexus\_DoBeS\_200...

EN 6:15 PM 5/02/2010

A B C D E F G H I

- +

Word list view

- tiini
- tikí
- tímêlyu
- tini
- tiye
- toko
- too pene
- tóódpi
- tookó pê
- tóótpi
- tpii yââ
- tpiitaa
- tpile pê
- tpile tp:oo
- tp:oo
- tpile wee
- tpyi y:ââ
- tpyuu

Lexical entry view

Lexical Entry desc  
[[te]] ener

Source

[[ghee]]  
[[koo]]  
[[tóótpi]]

Add to Knowledge Space Show in Knowledge Space

[[te]]

Results 1-12 of 12 for g entries

<< first < previous Page 1 next > last >>

Lexical Entry	
ghee	child with its mother
ghee	fish sp (parrotfish, Chlororus sp, or Hipposcarus longiceps)
ghee	mind?
gheede	crab
gheede	fish sp, Rabbitfish type
ghêêdê	kuu bird sp, black heron (?Egretta Picata)
ghêêdî	kuu bird sp. black heron
ghêmê	bird sp. sea eagle (Osprey, Pandion haliaetus)
gh:eme	masturbation
ghêpê	bird sp, Ducula pistrinaria postrema (Grey Imperial Pigeon)
ghépe	dmi broom
ghépe	dmi fish type (flounder)
ghil	bird sp
ghipe	dmi broom
ghipe	dmi fish sp (leatherjacket)
ghîpî	te fish sp.
ghoy	fish type

Results 1-12 of 12 for g entries

<< first < previous Page 1 next > last >>

lexicon: Word list

ghee (N)

child with its mother

A kpâm ghee knî yâpwo têtê dê lee dmi.  
My wife and children have gone to the garden.

ghee (N)

fish sp (parrotfish, Chlororus sp, or Hipposcarus longiceps)



Legend  
is-a-kind

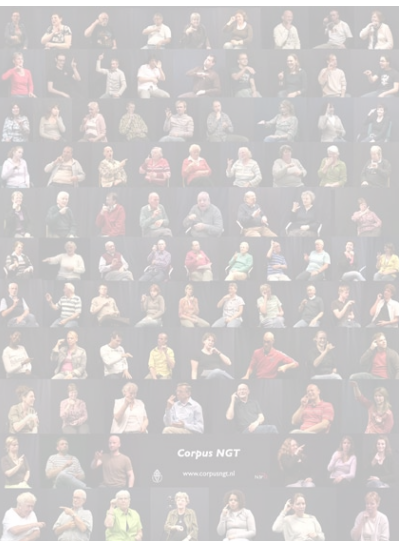
- brows
- conne
- lexus
- save

Relation T  
is-a-kind



# SignLinC

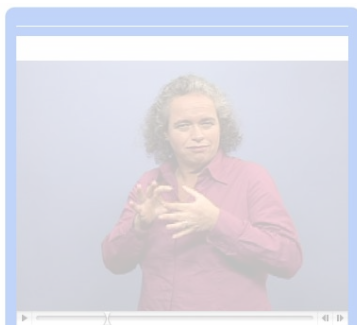
1. Genereren streaming versie Corpus NGT > gebruik in ANNEX, links vanuit NGc lexicon naar annotaties daarmee mogelijk
2. LMF-specificatie voor NGc-lexicon; conversie NGc-database > LMF / LEXUS
3. Ontwikkelen ELAN-functionaliteit:
  - Zoeken in LEXUS op basis van bestaande annotatie
  - LEXUS-db als CV voor annotaties gebruiken



Onno Crasborn



Trude Schermer  
Hessel Harmsen



Jacqueline Ringersma  
Han Sloetjes

