



# Linking ELAN and LEXUS

Onno Crasborn<sup>1</sup>, Micha Hulsbosch<sup>1</sup>, Han Sloetjes<sup>2</sup>, Trude Schermer<sup>3</sup> & Hessel Harmsen<sup>3</sup>  
Centre for Language Studies, Radboud University Nijmegen; Max Planck Institute for Psycholinguistics; Dutch Sign Centre

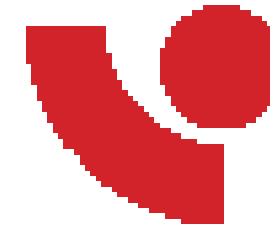


## Goals

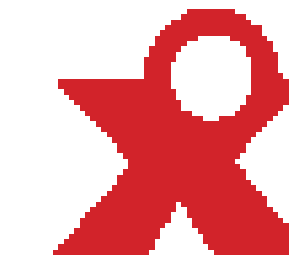
- Allowing ELAN to access information in a LEXUS lexicon, and linking to specific parts of a corpus in LEXUS entries.
- Creating a first connection between the lexicons of the Dutch Sign Centre and the Corpus NGT.

## MPI Language Archiving Technology

LEXUS: lexicon tool



ELAN: stand-alone annotation tool



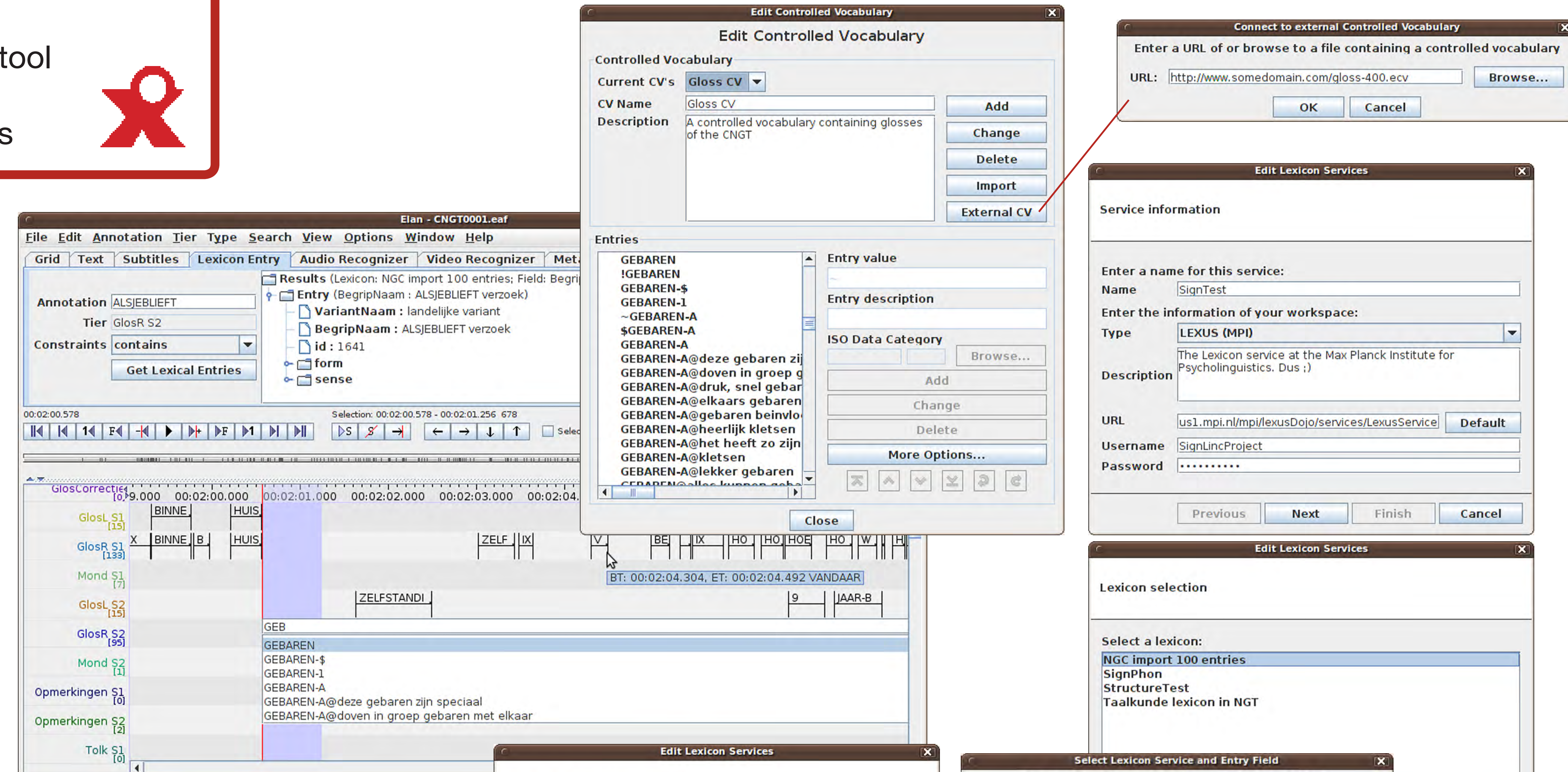
ANNEX: online browser for annotations

## Viewing lexical entries in ELAN & using a LEXUS field as a Controlled Vocabulary

[www.gebarencentrum.nl](http://www.gebarencentrum.nl)

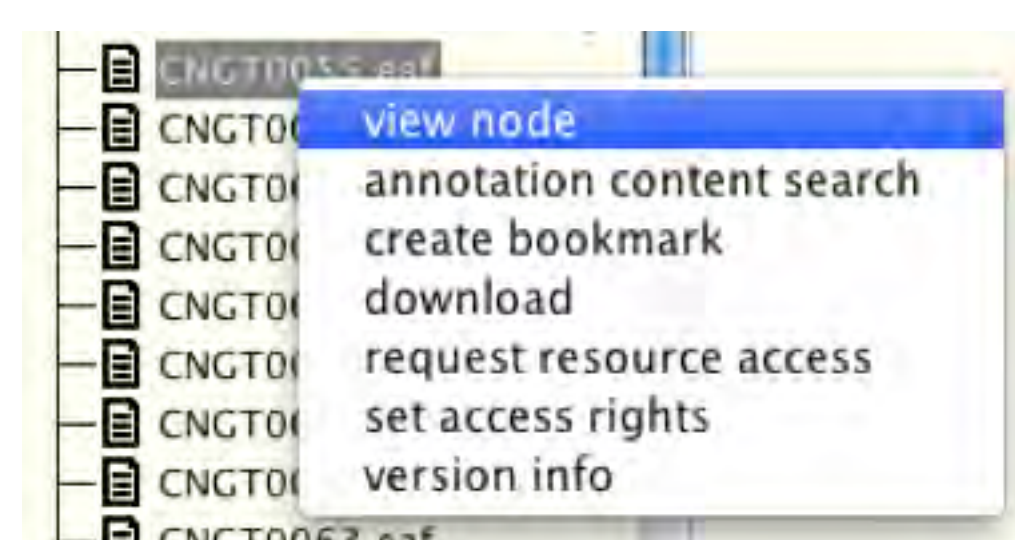


[www.corpusngt.nl](http://www.corpusngt.nl)



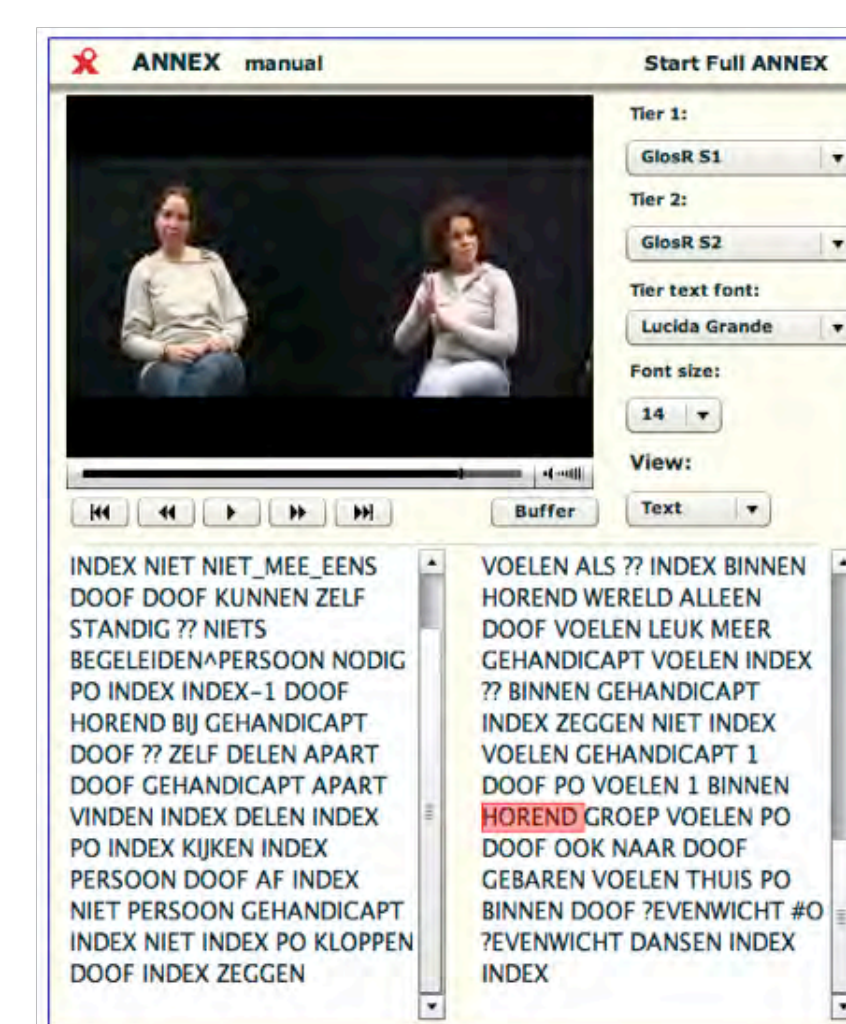
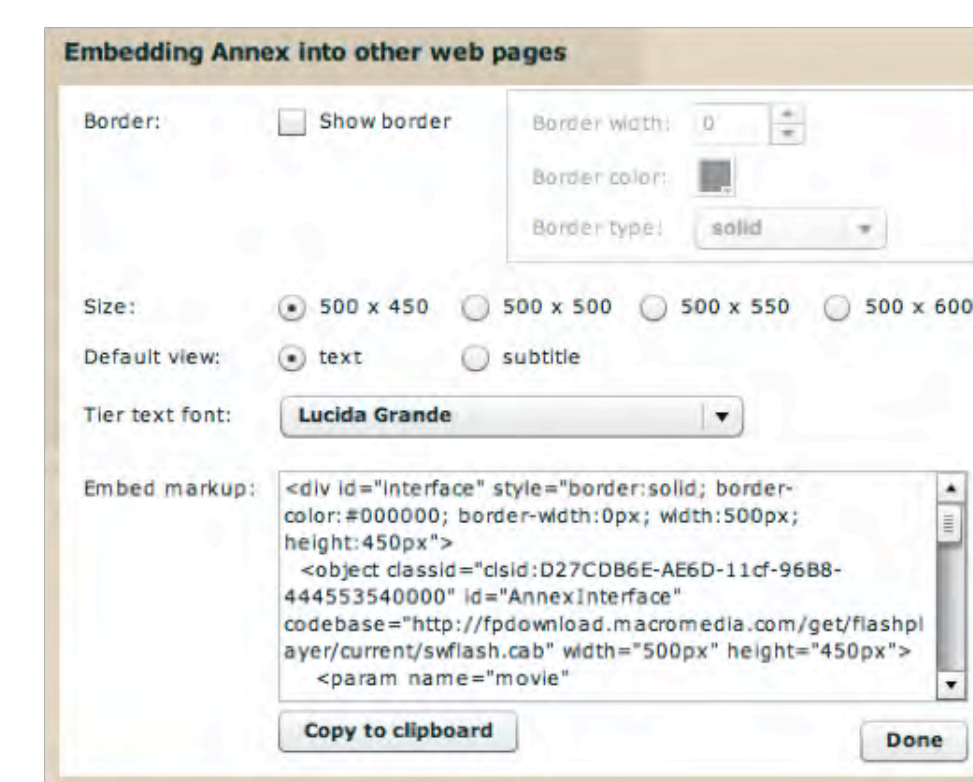
## Linking to annotated files in the MPI archive

Option 1: creating a hyperlink to a time segment that will open in ANNEX



View the archived EAF file in your browser, copy the URL, and specify the *start time* and the *duration*.

[http://corpus1.mpi.nl/ds/annex/protected/no\\_auth.jsp?nodeid=MPI654121%23&time=20000&duration=3500](http://corpus1.mpi.nl/ds/annex/protected/no_auth.jsp?nodeid=MPI654121%23&time=20000&duration=3500)



Option 2: embedding a YouTube-like player in a web page

Select 'Embed' from the ANNEX menu, and specify the display options. The user is free to select the tiers to display, as in the full view.

## Acknowledgments

- The work in this poster was funded by the CLARIN-NL project, [www.clarin.nl](http://www.clarin.nl)
- Thanks to developers Willem Sanders, Thomas Koller, André Moreira, and Huib Verwey for their contributions.

